



**Everything at a glance.
The new standard for radiator thermostats**



Everything at a glance – cost savings, convenience and design



Everything at a glance.

Take your vision test at

www.?????????????????.com

Get a new angle on the matter

Unique – the flip-up display. The TheraPro HR90 radiator thermostat provides you with a top view of the temperature you feel comfortable in. Simply leave it to the TheraPro HR90 radiator thermostat to regulate the ambient temperature at the ideal level for you. And enjoy the right temperature at the right time, all the time. We think you'll be impressed by its compact modern housing design, intuitive operation and potential cost savings of up to 30 % .

User-friendly

1 Adjustable display

The flip-up display can be easily read even in awkward situations, e.g. under window sills.

2 Background lighting

Thanks to background lighting and large type, all details are clearly legible.

3 Easy programming

The TheraPro HR90 radiator thermostat can be removed for easier programming.

4 Frost-proof function

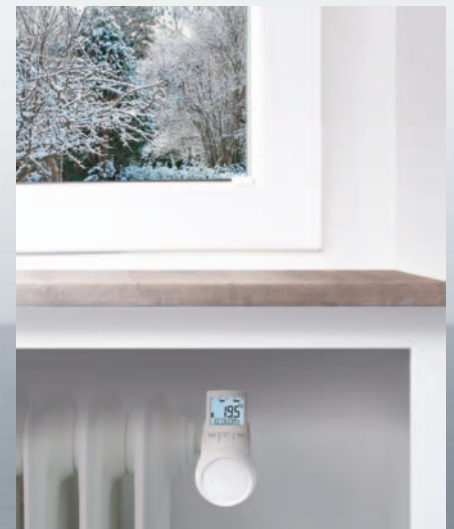
If the temperature drops below 5 °C, the TheraPro HR90 radiator thermostat opens until the temperature rises to 6 °C again, thus preventing the radiator from freezing.

5 Child/Safety lock

You can lock the TheraPro HR90 radiator thermostat to prevent unauthorized access.

6 ECO saver mode

In ECO mode, the ambient temperature is lowered by 3 °C.



Easy to read even in awkward locations.

Save heating costs easily

The TheraPro HR90 radiator thermostat helps you keep your heating costs under control. It automatically regulates the heating valve via electronic time programs. You can easily program heating and saving periods the way you want, according to your personal daily routine.

7 Window function

To save energy, the radiator thermostat closes the radiator valve when you open a window, causing a steep drop in temperature.

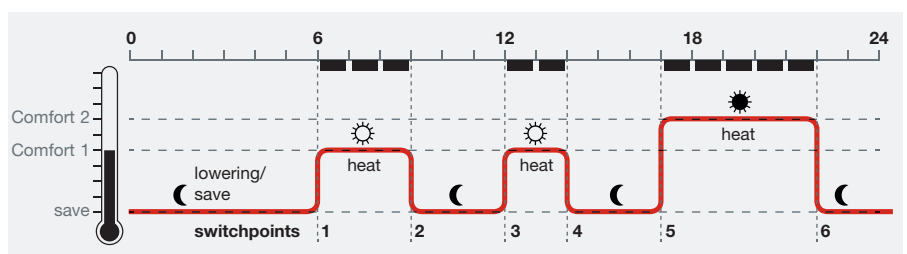
8 Additional operating modes

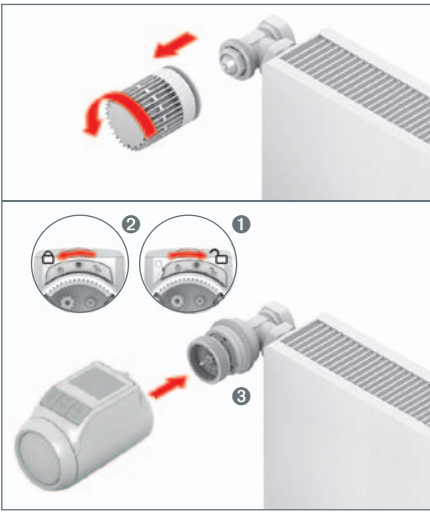
The additional "Party", "Special Day" and "Holiday" modes are easy to set.

9 Convenient programming

You can set up to six switchpoints per day and three different temperatures (7 days a week)

Lowering the ambient temperature by 1 °C saves around 6 % energy!





Easy to install

The TheraPro HR90 radiator thermostat can be easily installed on all standard radiator valves with a M30 x 1.5 connection, without causing any soiling or water stains.

Ready to go in a few steps:

- insert battery
- set language, time and date
- remove old thermostat cap
- mount adapter if necessary
- mount valve attachment
- mount radiator thermostat TheraPro HR90

Your TheraPro HR90 radiator thermostat is now ready for operation with the default settings.

Preset time programs

Once installed, the TheraPro HR90 radiator thermostat operates immediately with the default settings. You can change them easily to suit your needs.

Copying time programs

If several TheraPro HR90 radiator thermostats are to operate with the same time program, it need only be set on one thermostat, and then transferred to the other radiator thermostats by cable.

Moves with you when you move home

A one-off investment! If you move home you can of course simply take your TheraPro HR90 radiator thermostat with you.

Experience and guarantee

Honeywell is backed by over 15 years of experience in the development and production of programmable radiator thermostats.

TheraPro HR90	
Technical data	
Protection class	IP30
Supply voltage (batteries included, life span approx. two years)	Battery type: 2 x Mignon, Type LR6, AA, AM3 2 x Lithium, Type LR6, AA, AM3 2 x NiMH, Type LR6, AA, AM3
Connection to the radiator valve	Fits all standard radiator valves M30 x 1.5 Honeywell Braukmann, MNG, Heimeier, Oventrop
Ambient temperature	0 ... 50 °C
Dimensions	96 x 54 x 60 mm
Humidity	10 ... 90 % rel. humidity

Honeywell Technologies Sàrl

ACS-ECC EMEA
Z.A. La Pièce 16
1180 Rolle
Switzerland
www.honeywell.com

EN3H-0413GE51 R0113
Änderungen vorbehalten.
© 2013 Honeywell GmbH

Honeywell